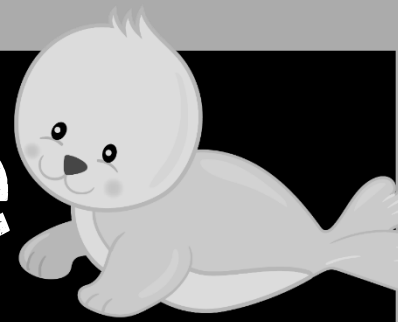




# Sur la banquise

## Atelier de programmation



par

CaraVan



## Crédits

<https://www.teacherspayteachers.com/Store/Prettygrafik>

<https://www.teacherspayteachers.com/Store/Chirp-Graphics>

<https://fr.freepik.com>

<https://fr.freepik.com/macrovector>

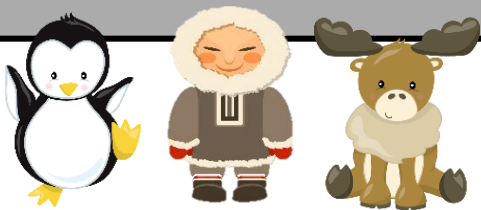
<https://www.teacherspayteachers.com/Store/Creating4-The-Classroom>

<https://www.teacherspayteachers.com/Store/Sonya-Dehart-Design>

<https://www.teacherspayteachers.com/Store/The-3am-Teacher>

<http://kimberlygeswein.com>





# Sur la banquise

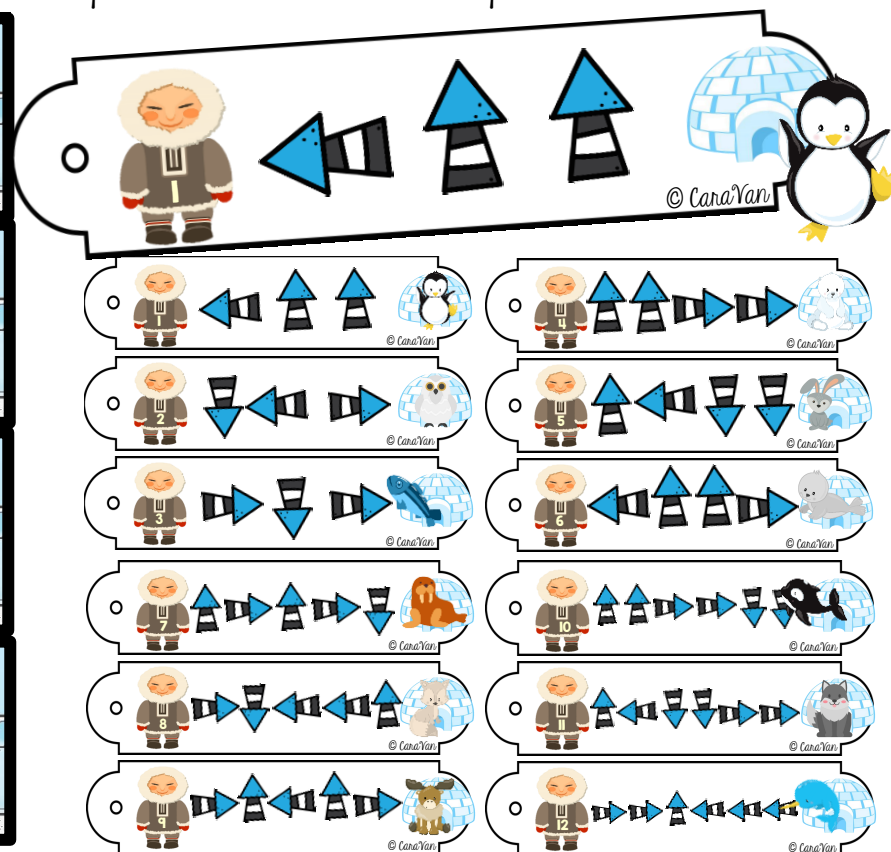


## Consignes

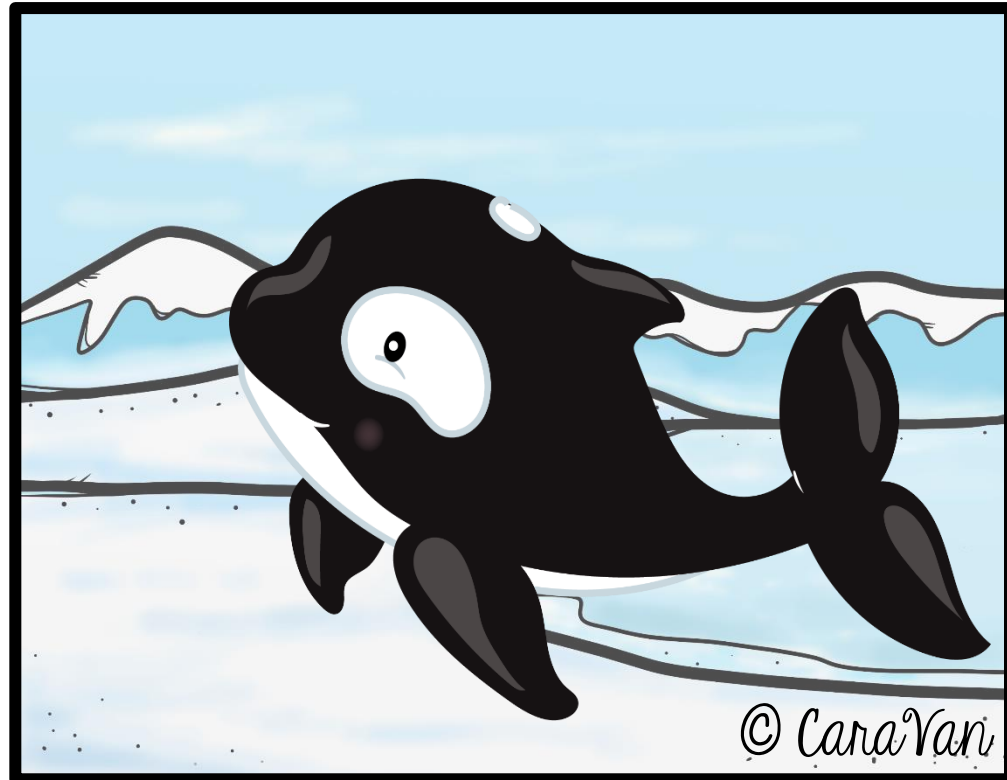
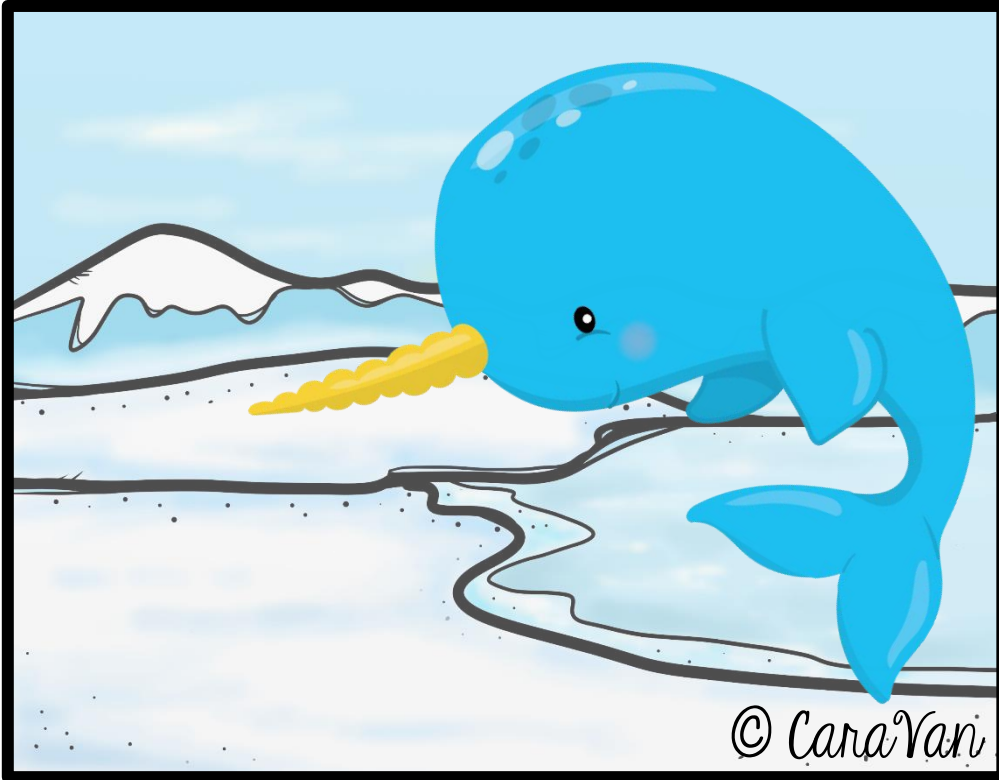
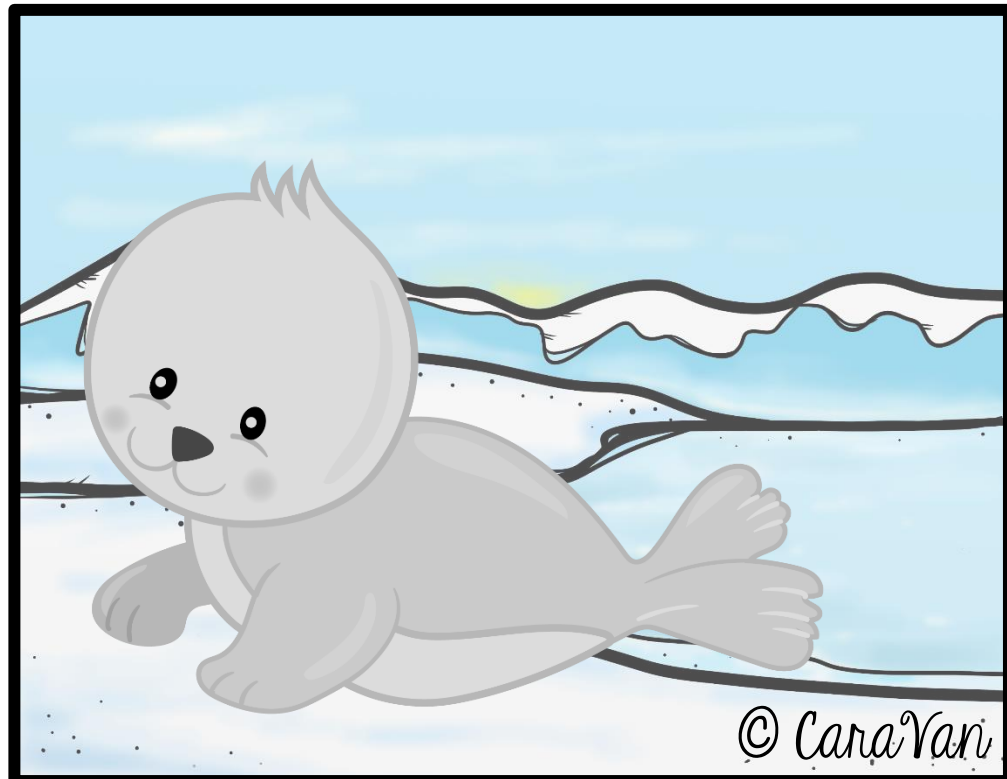
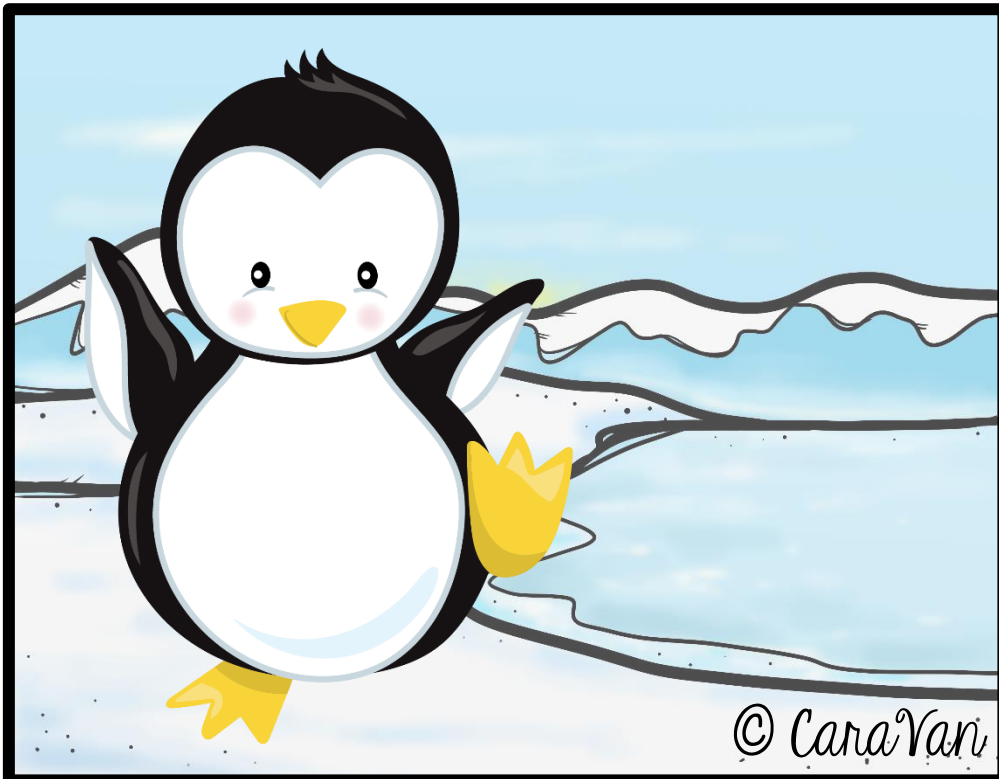
1. L'élève prend la séquence numéro 1 et suit le chemin indiqué par les flèches pour savoir vers quel animal l'inuit se dirige. Ensuite, il peut coller l'animal sur l'igloo (à la fin de la séquence).
2. Lorsque l'élève a trouvé vers quel animal se diriger, il place Bee-Bot sur l'image de « l'inuit » (case départ).
3. L'élève programme Bee-Bot pour se rendre sur l'animal en question.

**ATTENTION!** Les séquences ne sont pas à reproduire avec Bee-Bot. La séquence « chasse au trésor » est à faire avant de débuter la programmation. C'est un petit défi à faire pour savoir sur quel animal se rendre.

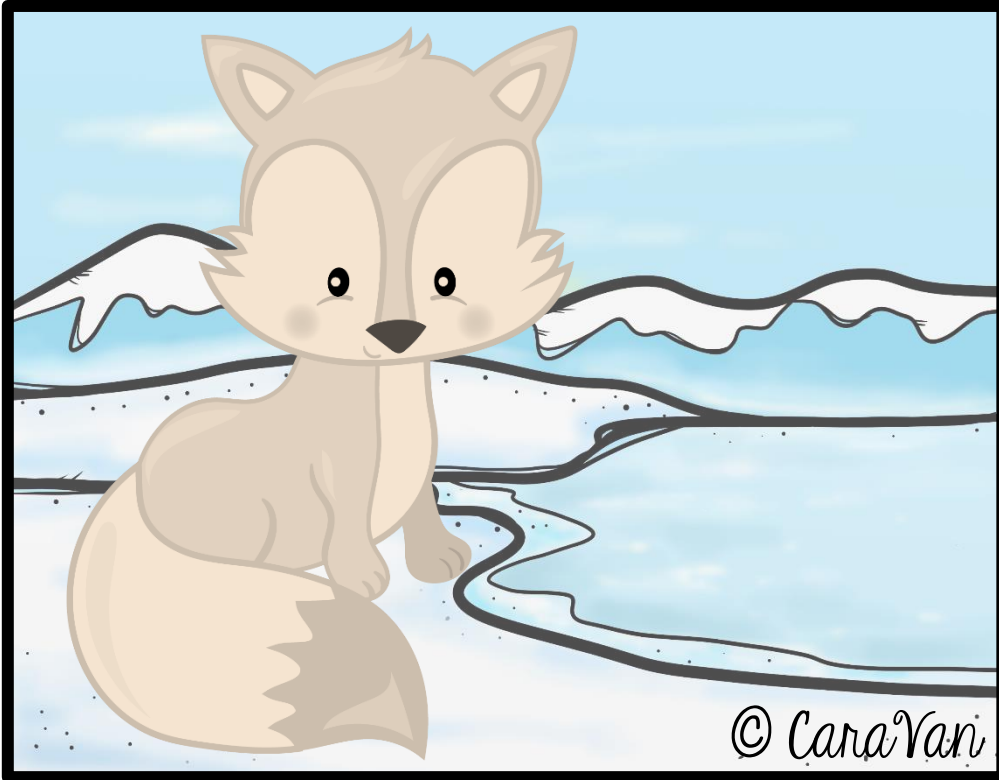
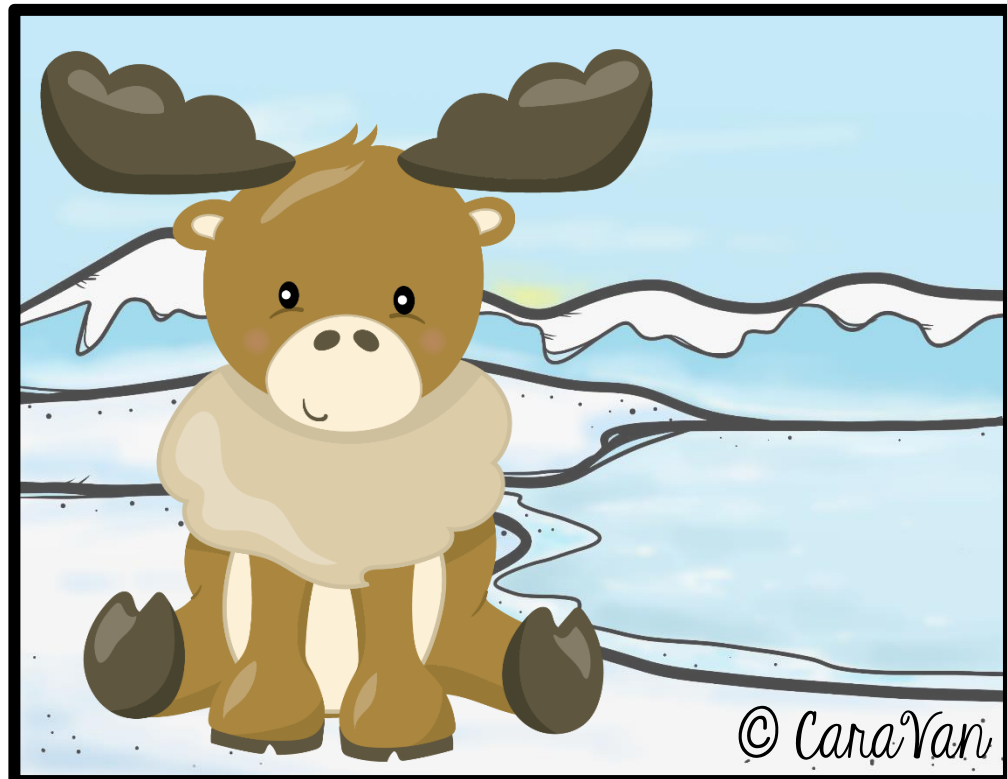
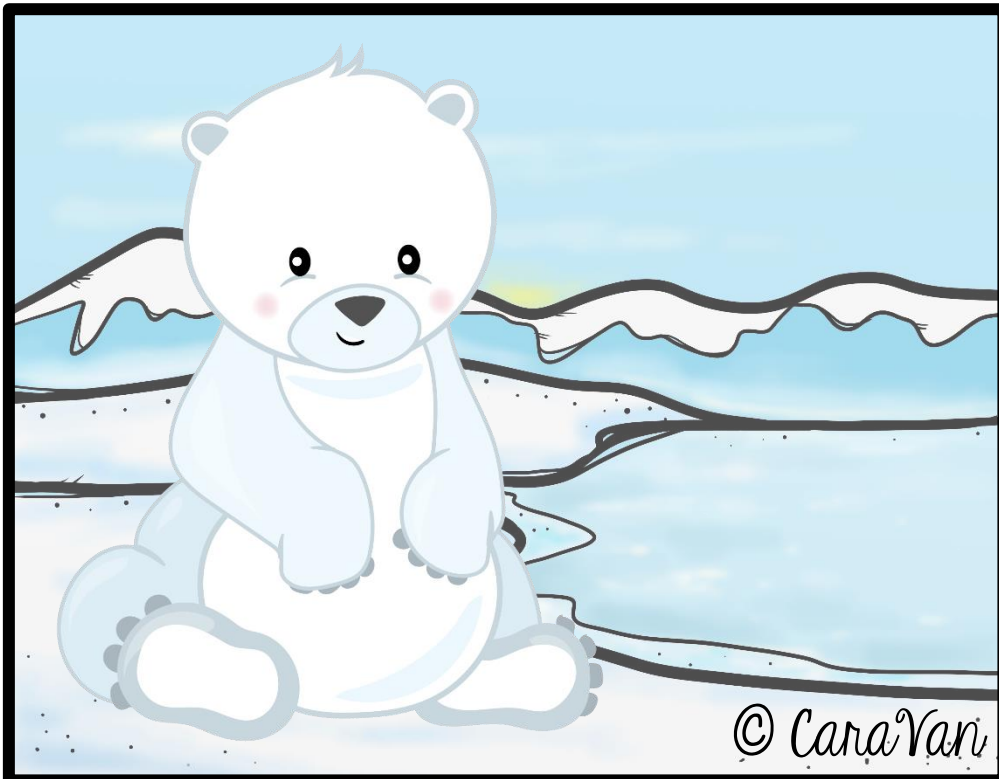
\* La disposition des images sur le tapis de jeu doit correspondre au modèle pour obtenir les mêmes réponses

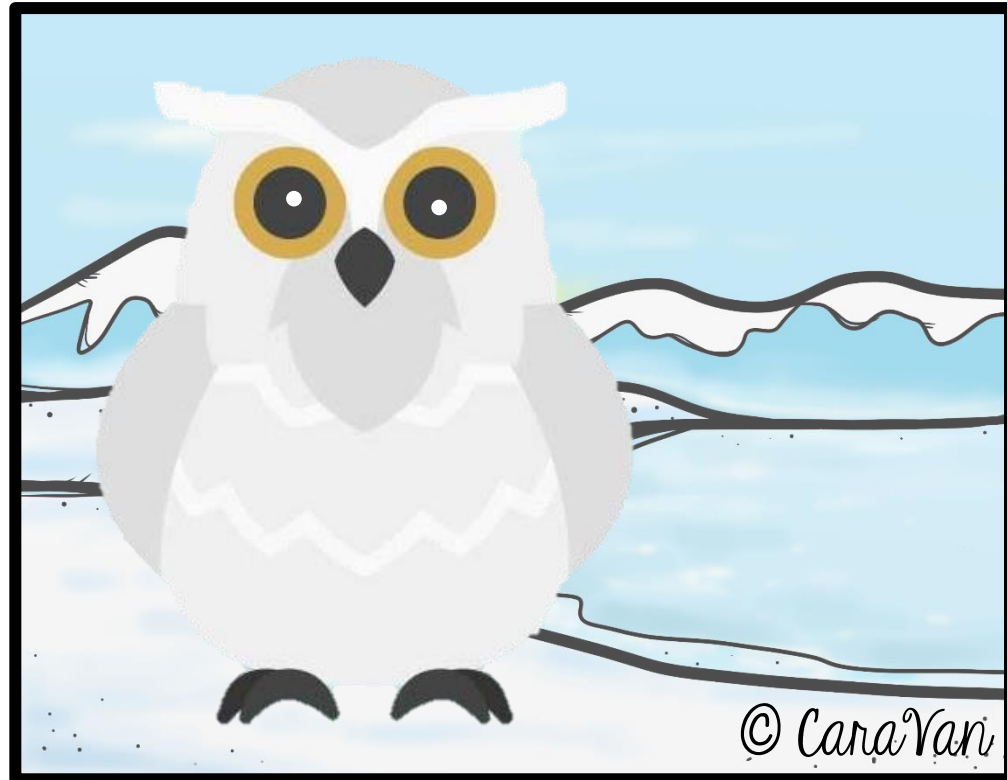
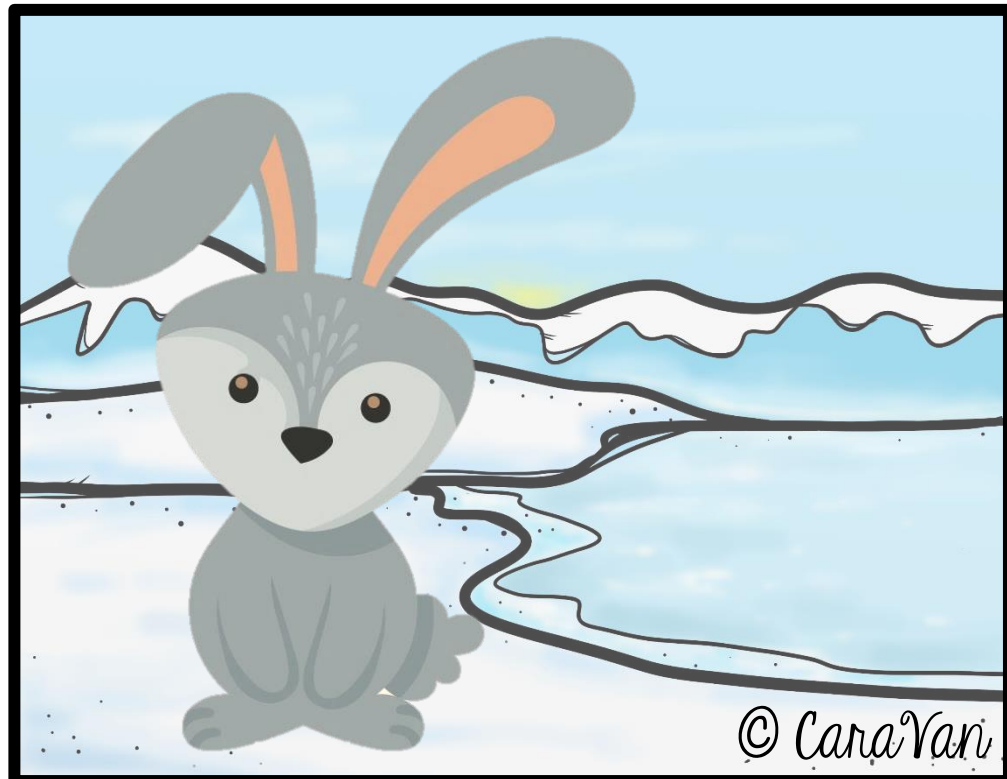
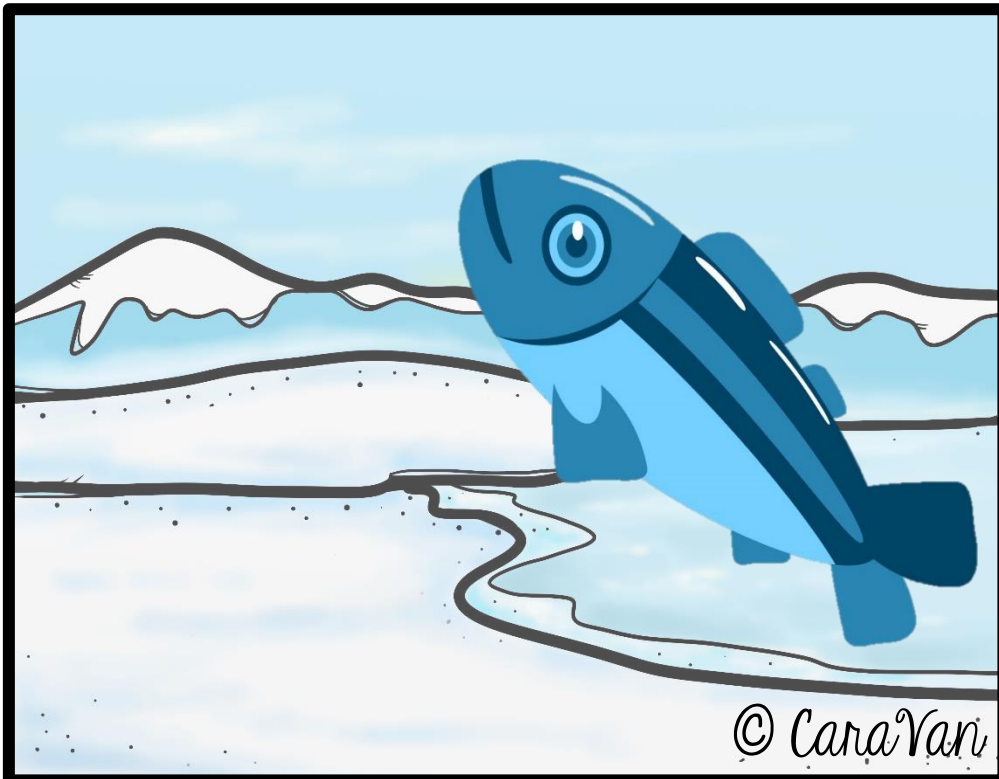


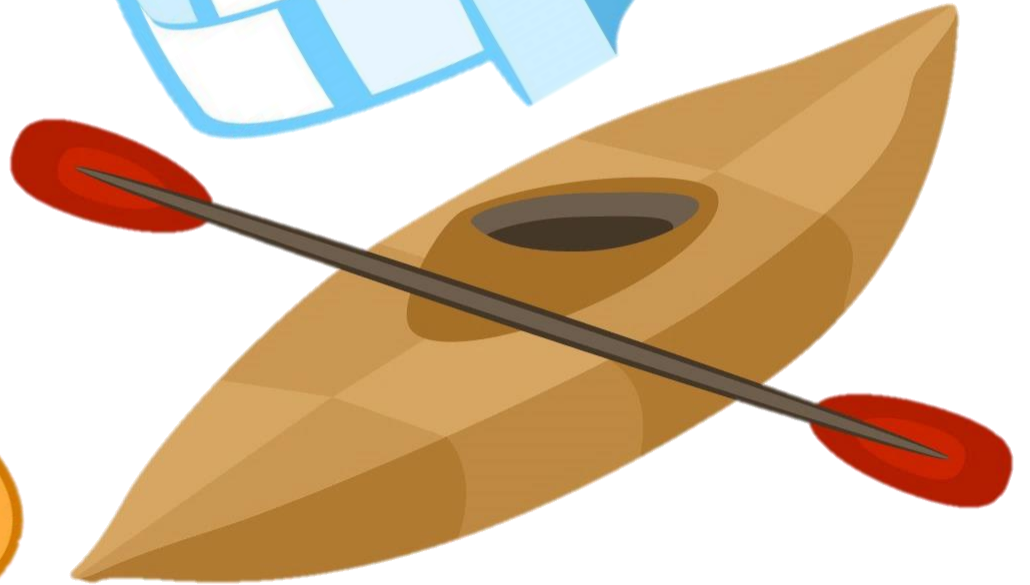
\*Vous pouvez augmenter la difficulté en demandant de programmer l'inuit vers son moyen de transport avant de rejoindre l'animal. Puis, de programmer son retour vers l'igloo.



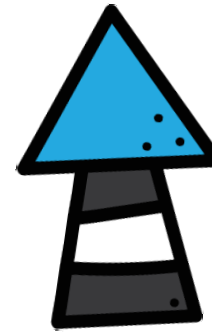
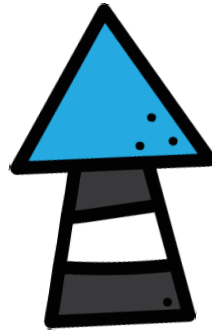
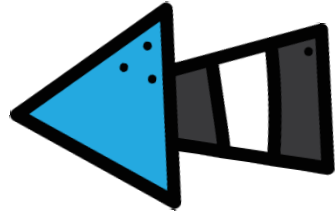




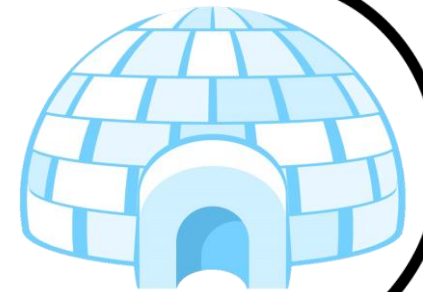
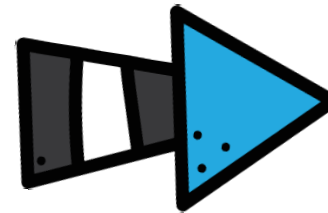
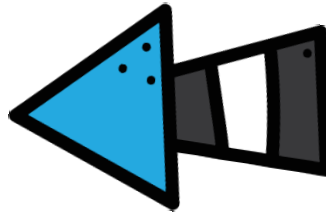




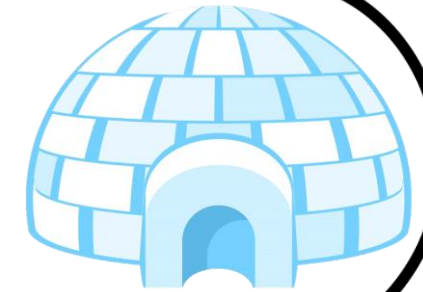
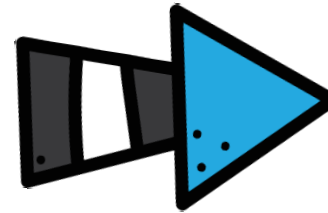
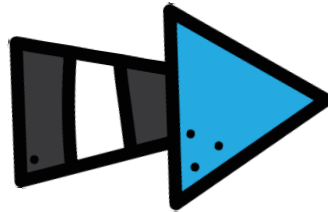




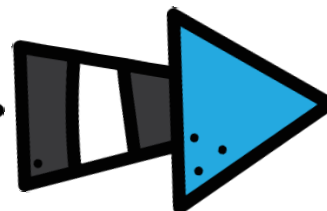
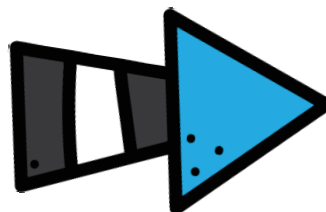
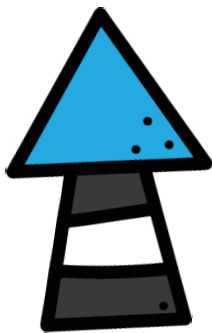
© CaraVan



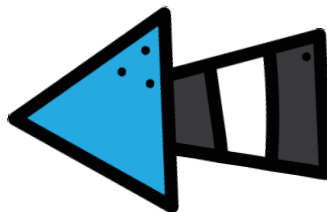
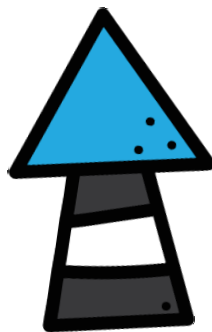
© CaraVan



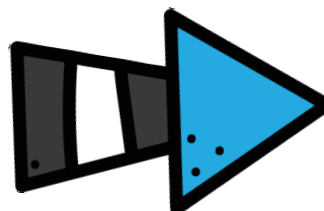
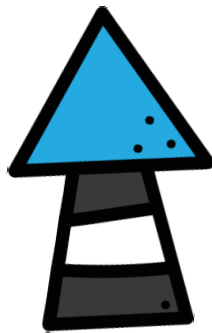
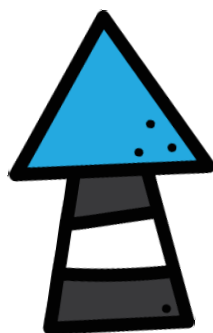
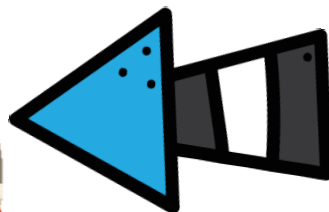
© CaraVan



© CaraVan

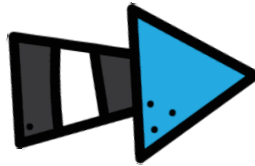
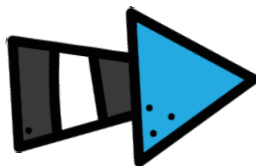


© CaraVan

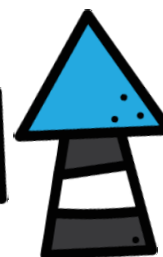
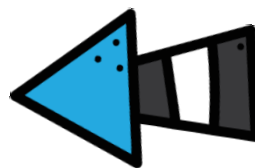
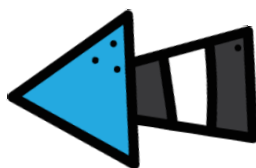
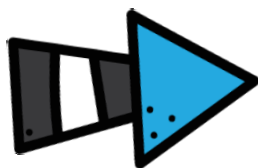


© CaraVan

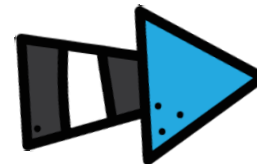
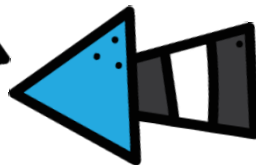




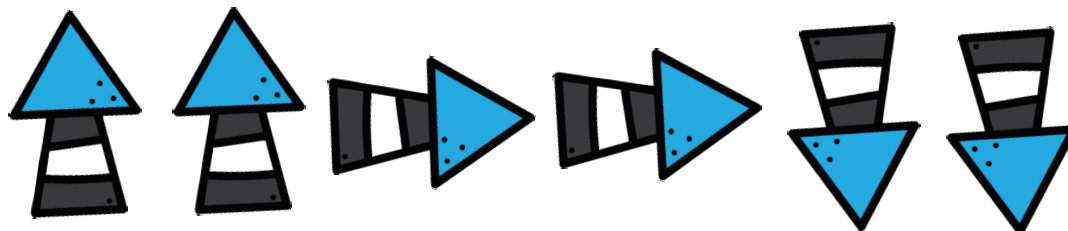
© CaraVan



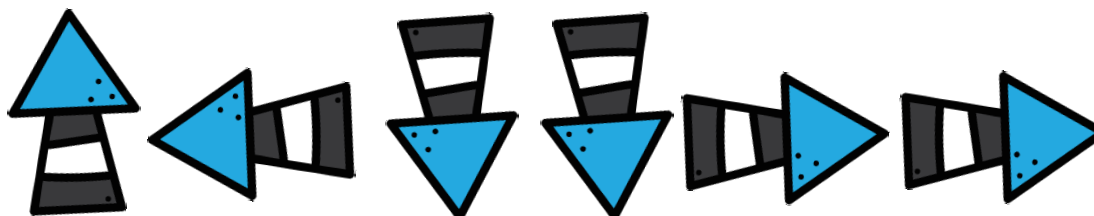
© CaraVan



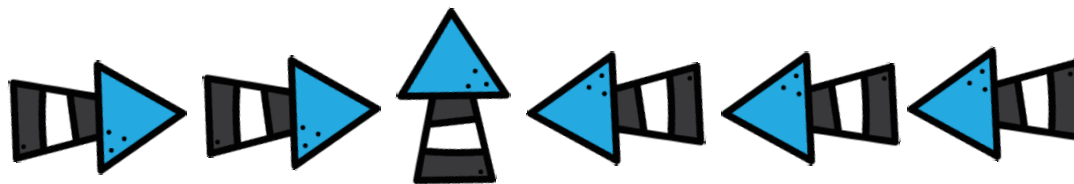
© CaraVan



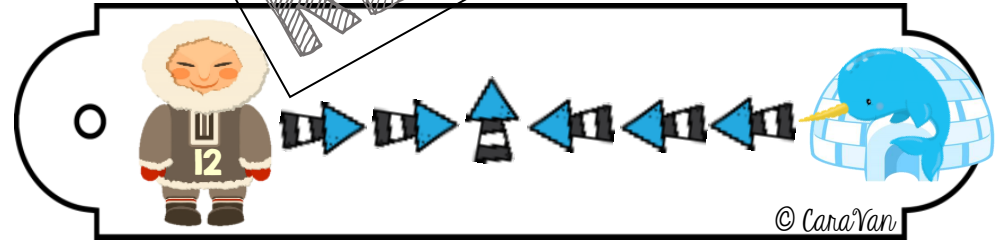
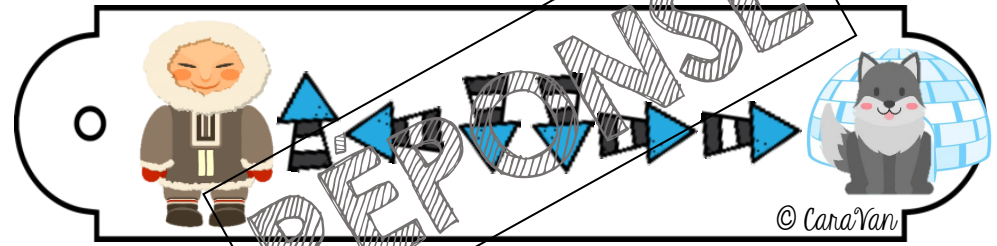
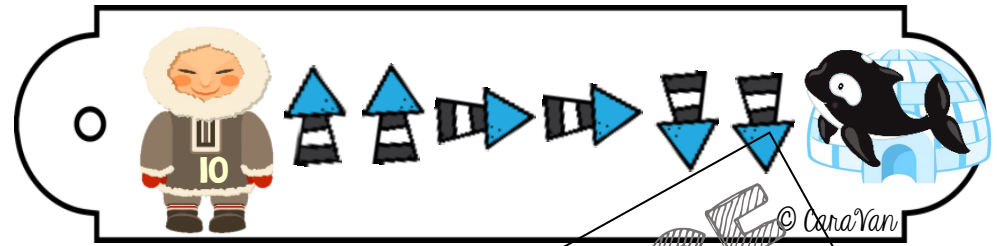
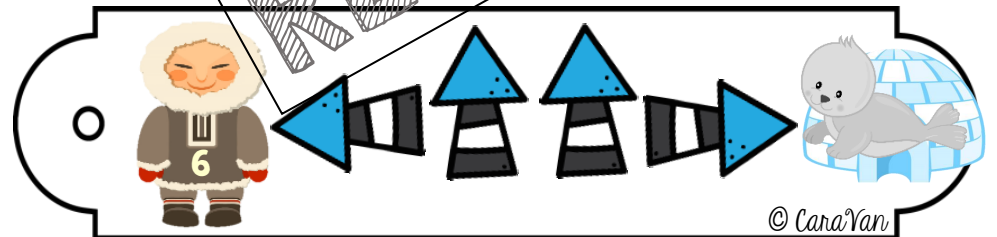
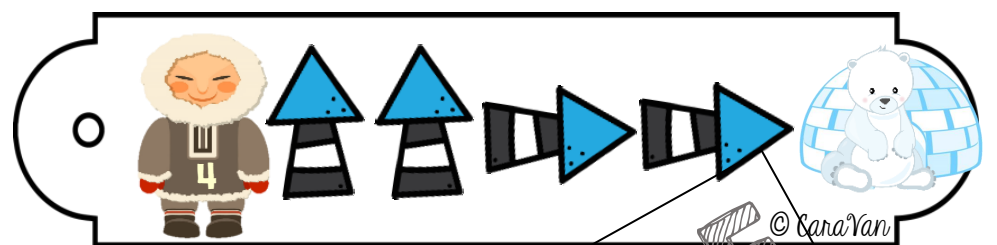
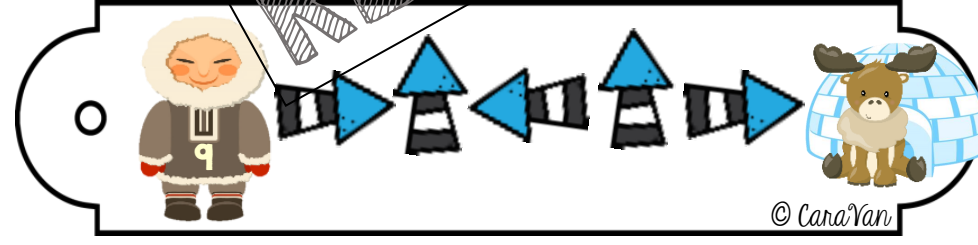
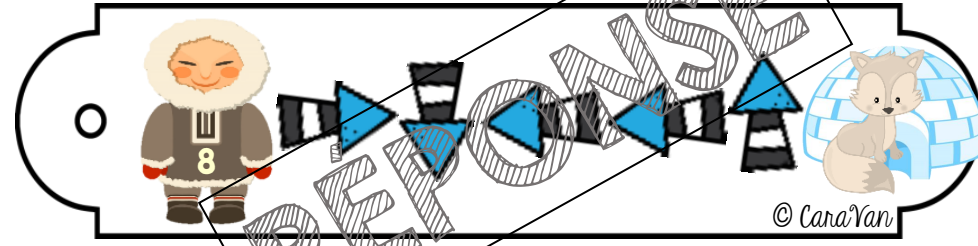
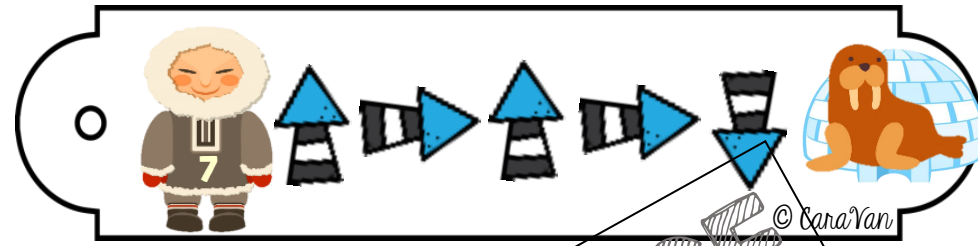
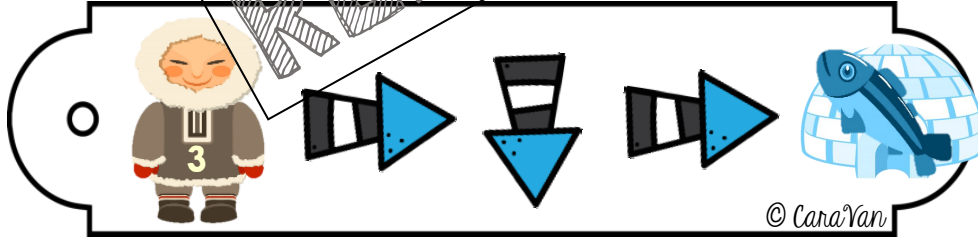
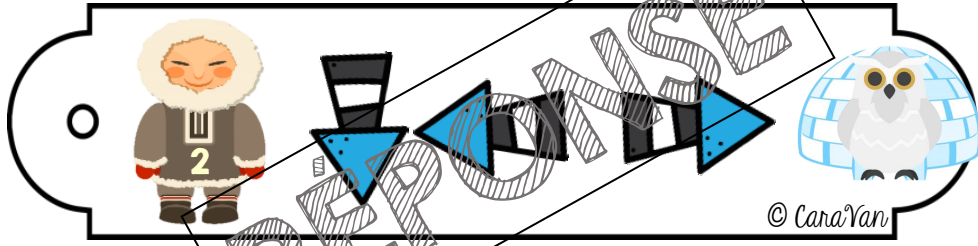
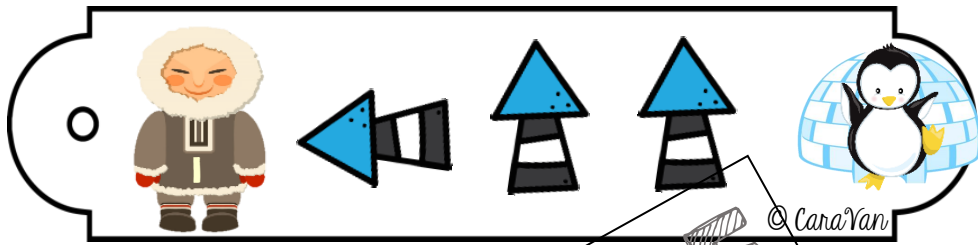
© CaraVan



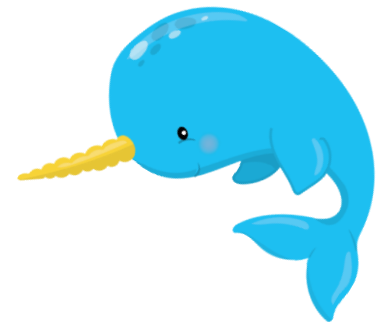
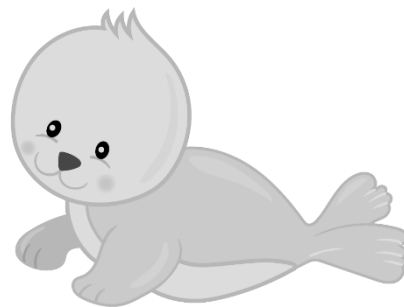
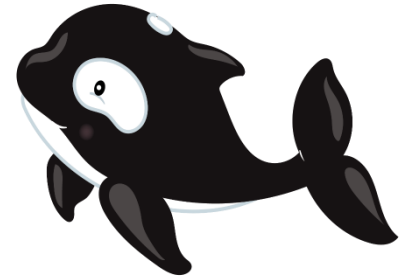
© CaraVan



© CaraVan







Images pour mettre dans les igloos (à titre de réponse)

# Conditions d'utilisation

Cet atelier a été créé par Vanessa Côté et Caroline Ann Gagnon, enseignantes au préscolaire à la CSMB.

Il est interdit de modifier, de vendre ou d'enlever notre signature présente dans le document.

Si vous désirez partager ce document, il serait apprécié de référer vos collègues sur notre page Facebook « CaraVan ».



<https://www.facebook.com/groups/1541868205947224/>

\* Si vous constatez des erreurs dans nos documents, veuillez nous en faire part le plus rapidement possible afin que nous puissions faire les corrections nécessaires.



Vent du nord!

© CaraVan